

1950s Van Dyke in Center Line Michigan Views



Water Tower Municipal Building Center Line 1950



Old stores on east side of Van Dyke just south of St Clement church in late 1950s just before they were torn down for new St Clement church.



Old Wolf Hardware and block of stores just south of it in late 1950s



Van's Pharmacy 25501 Van Dyke Center Line Michigan
Van's Drug Store



1959 view of Van Dyke showing Whites Laundry, 5 and 10 store several other Center Line stores on Tom Thomas stated The photo starts on the South side of Dale Street Whites, Smitty the QT Bakery and Berks are all on the west side of Van Dyke.

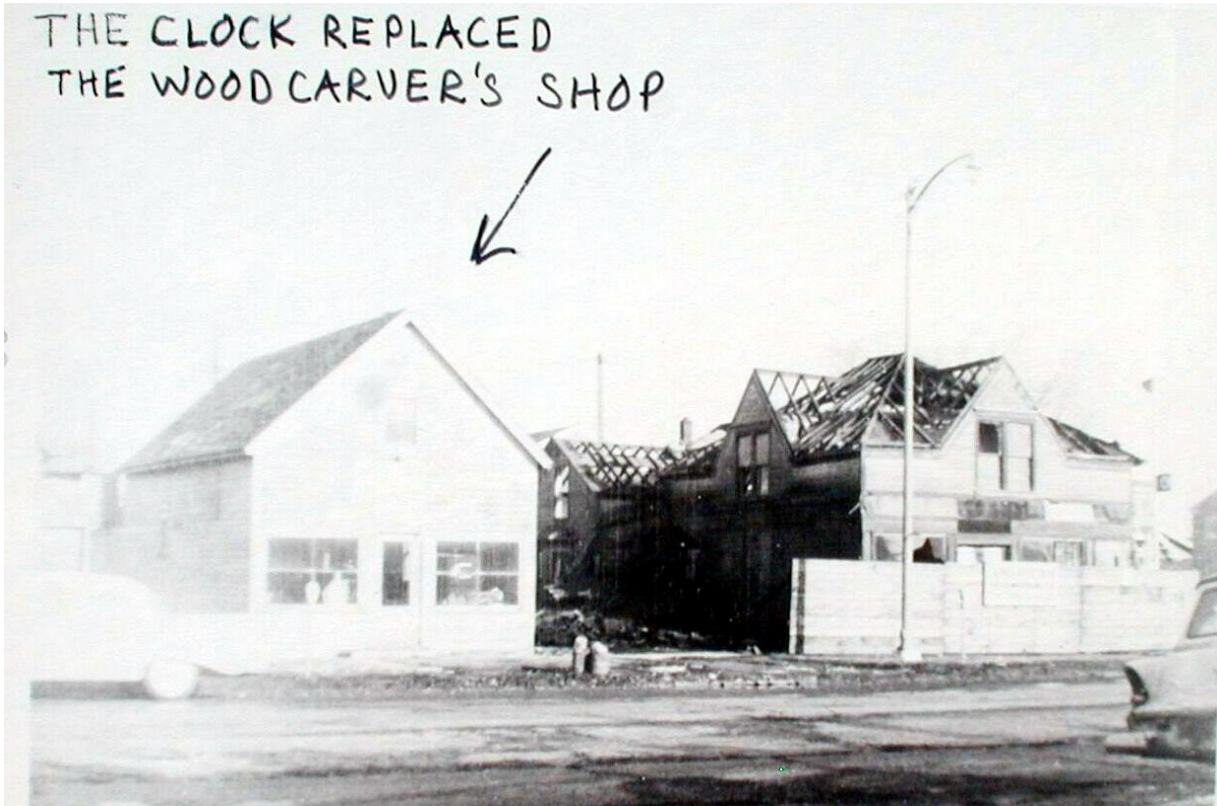


Buechels old store and other stores on East side of Van Dyke in the 1950s



Old stones on East side of Van Dyke and Kayo gas station. Note gas 28¢

Wood Carvers Shop



Wood carvers store Ben Schmidt on East side of Van Dyke



LOOKING SOUTHEAST ON VANDYKE AT CENTRAL
Looking southeast on Van Dyke at central



Center Line City Hall with Water Tower 1950s